

**1 7/8" Ball Diameter (A)**

Part # Zinc Finish	Part # Chrome Finish	Part # Stainless Finish	Shank Diameter (B)	Shank Length (C)	Capacity	Notes
-	2032	-	3/4" Internal	1 3/4"	2,000 lbs	Internal Thread

Part # Zinc Finish	Part # Chrome Finish	Part # Stainless Finish	Shank Diameter (B)	Shank Length (C)	Capacity	Notes
-	2212	-	3/4"	1 1/4"	2,000 lbs	Internal Thread
5011	5012	-	3/4"	1 1/2"	2,000 lbs	-
5021	5022	-	3/4"	2 3/8"	2,000 lbs	-
-	4102	-	3/4"	3 3/8"	2,000 lbs	X-Long Shank
-	2252	-	1"	1 3/4"	2,000 lbs	-
5031	5032	-	1"	2 1/8"	2,000 lbs	-
4121DT	-	-	1"	3 3/8"	2,000 lbs	X-Long Shank

Part # Zinc Finish	Part # Chrome Finish	Part # Stainless Finish	Shank Diameter (B)	Shank Length (C)	Capacity	Notes
-	-	2290	3/4"	1 3/4"	2,000 lbs	Stainless Steel
-	-	2291	1"	2 1/4"	2,000 lbs	Stainless Steel

Part # Zinc Finish	Part # Chrome Finish	Part # Stainless Finish	Shank Diameter (B)	Shank Length (C)	Capacity	Notes
-	2301	-	1"	2 1/4"	2,000 lbs	Pintle Hook Replacement
-	2307	-	1 1/8"	2 1/4"	2,000 lbs	Pintle Hook Replacement

**2" Ball Diameter (A)**

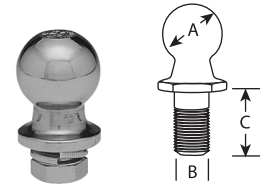
Part # Zinc Finish	Part # Chrome Finish	Part # Stainless Finish	Shank Diameter (B)	Shank Length (C)	Capacity	Notes
-	2082	-	3/4" Internal	1 3/4"	3,500 lbs	Internal Thread

Part # Zinc Finish	Part # Chrome Finish	Part # Stainless Finish	Shank Diameter (B)	Shank Length (C)	Capacity	Notes
-	2262	-	3/4"	1 1/2"	3,500 lbs	-
5061	5062	-	3/4"	1 1/2"	3,500 lbs	-
5071	5072	-	3/4"	2 3/8"	3,500 lbs	-
-	4112DT	-	3/4"	3 3/8"	3,500 lbs	X-Long Shank
5081	5082	-	1"	2 1/8"	6,000 lbs	-
-	2202	-	1"	2 1/2"	5,000 lbs	-
4131	4132	-	1"	3 3/8"	6,000 lbs	X-Long Shank
2191	2192	-	1 1/4"	2 1/8"	8,000 lbs	-

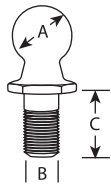
Part # Zinc Finish	Part # Chrome Finish	Part # Stainless Finish	Shank Diameter (B)	Shank Length (C)	Capacity	Notes
-	-	2292	3/4"	2 1/4"	3,500 lbs	Stainless Steel
-	-	2293	1"	2 1/4"	7,500 lbs	Stainless Steel

Part # Zinc Finish	Part # Chrome Finish	Part # Stainless Finish	Shank Diameter (B)	Shank Length (C)	Capacity	Notes
-	80020	-	1"	2"	5,000 lbs	2" Rise Ball

Part # Zinc Finish	Part # Chrome Finish	Part # Stainless Finish	Shank Diameter (B)	Shank Length (C)	Capacity	Notes
-	2302	-	1"	2 1/4"	10,000 lbs	Pintle Hook Replacement
-	2308	-	1 1/8"	2 1/4"	7,000 lbs	Pintle Hook Replacement



TRAILER BALLS



### 2 5/16" Ball Diameter (A)



Part # Zinc Finish	Part # Chrome Finish	Part # Plain or Painted	Shank Diameter (B)	Shank Length (C)	Capacity	Notes
-	2242	-	1"	2 1/8"	5,000 lbs	-
5041	5042	-	1"	2 1/8"	6,000 lbs	-
-	2254	-	1 1/4"	2 1/8"	7,500 lbs	-
5091	5092	-	1 1/4"	2 1/4"	10,000 lbs	-
-	-	2195	1 1/4"	2 1/4"	25,000 lbs	-
-	-	2197	1 1/4"	2 3/4"	12,500 lbs	-

Part # Zinc Finish	Part # Chrome Finish	Part # Plain or Painted	Shank Diameter (B)	Shank Length (C)	Capacity	Notes
-	2303	-	1"	2 1/4"	10,000 lbs	Pintle Hook Replacement
-	2309	-	1 1/8"	2 1/8"	10,000 lbs	Pintle Hook Replacement
-	2310	-	1 1/4"	2 1/4"	12,000 lbs	Pintle Hook Replacement

Part # Zinc Finish	Part # Chrome Finish	Part # Plain or Painted	Shank Diameter (B)	Shank Length (C)	Capacity	Notes
4983	4984	-	1 1/4"	2 1/4"	10,000 lbs	Extra Clearance for Weight Distribution Hitches

Part # Zinc Finish	Part # Chrome Finish	Part # Plain or Painted	Shank Diameter (B)	Shank Length (C)	Capacity	Notes
-	-	2190	1 1/4"	2 1/4"	25,000 lbs	1" Rise

Part # Zinc Finish	Part # Chrome Finish	Part # Plain or Painted	Shank Diameter (B)	Shank Length (C)	Capacity	Notes
-	-	7047	1 1/4"	3 1/2"	30,000 lbs	1" Rise, Extra Long Shank

Part # Zinc Finish	Part # Chrome Finish	Part # Plain or Painted	Shank Diameter (B)	Shank Length (C)	Capacity	Notes
-	80025	-	1 1/4"	2"	7,500 lbs	2" Rise
-	-	2196	1 1/4"	2 1/8"	30,000 lbs	2" Rise
-	-	2198	1 1/2"	2 3/4"	30,000 lbs	2" Rise

Part # Zinc Finish	Part # Chrome Finish	Part # Plain or Painted	Shank Diameter (B)	Shank Length (C)	Capacity	Notes
-	-	2193	1 3/8"	2 1/4"	40,000 lbs	-

Part # Zinc Finish	Part # Chrome Finish	Part # Plain or Painted	Shank Diameter (B)	Shank Length (C)	Capacity	Notes
-	-	5973	2 3/16"	2 3/4"	30,000 lbs	Smooth Shank
-	-	2184	2 3/16"	4"	30,000 lbs	Smooth Shank

Part # Zinc Finish	Part # Chrome Finish	Part # Plain or Painted	Description
-	-	2185	Collar for #2184 Smooth Shank Ball, 3" long, 2 3/16" ID, 2 3/4" OD

**3" Ball Diameter (A)**

Part # Zinc Finish	Part # Plain or Painted	Shank Diameter (B)	Shank Length (C)	Capacity	Notes
-	2300	2"	3¼"	20,000 lbs	-
6303	-	2⅜"	2¾"	30,000 lbs	Smooth Shank



**Trailer Ball Cover**

Part #	Description
2576	Fits 1⅞" and 2" Trailer Balls
2577	Fits 2⅝" Trailer Balls



**Reducer Bushing**

Part #	Description
2561	Adapts ¾" Shank Ball to fit 1" Hole
2562	Adapts 1" Shank Ball to fit 1¼" Hole



**Trailer Ball Sets**

Part #	Ball Sizes Included	Shank Dia.	Shank Length	Capacity
2867DAT	1⅞", 2" & 2⅝"	1"	2⅜"	1⅞" @ 2,000 lbs 2" & 2⅝" @ 10,000 lbs



**Adapt-Hitch-Ball® Sets**

Part # Chrome Finish	Part # Stainless Steel Ball	Ball Sizes Included	Shank Diameter	Shank Length	Capacity
57800	87800	1⅞" & 2"	¾"	2⅜"	5,000 lbs
57901	87901	1⅞" & 2"	1"	2¼"	8,000 lbs
57903	87900	1⅞", 2" & 2⅝"	1"	2¼"	8,000 lbs
57908	-	1⅞", 2" & 2⅝"	1"	3¼"	8,000 lbs



**Replacement Components for Adapt-Hitch-Ball®**

Part # Chrome	Part # Stainless Steel	Part # Pin Only	Description
57300	87300	57301	1⅞" ball with pin
57400	87400	57401	2" ball with pin
57600	87600	57601	2⅝" ball with pin will fit shank with ¾" thread



Part # Chrome	Part # Stainless Steel	Part # Pin Only	Description
57101	-	-	Shank only ¾" x 2⅜" thread
57102	Stainless ball sets use chrome shanks	-	Shank only 1" x 2¼" thread
57104	-	-	Shank only 1" x 3¼" thread



**Accessories for Adapt-Hitch-Ball®**

Part #	Description
11500	Nylon storage case with velcro closure holds 3 balls and pins



Part #	Description
11600	Molded Vinyl Shank Cover



Part #	Description
98711	3-bike carrier mounts to any Adapt-Hitch-Ball® shank. Rubber inserts in top and bottom clamp plates securely grip up to 3 bikes. Clamp plates can be locked. (Lock NOT Included)

